



**Accreditation of Prior Experiential Learning for Access
(APEL (A))**

APEL (A) POLICY HANDBOOK

Guidelines on the Application of APEL (A)

Table of Contents

No.	Topic	Page
1.	Definition of APEL	3
2.	Definition of APEL (A)	3
3.	When can APEL (A) be used?	3
4.	APEL (A) Admission Criteria	4
5.	APEL (A) Assessment	4
6.	Format of Aptitude Test	4
7.	Scope of APEL (A) Aptitude Test	5
8.	APEL (A) Application Process for Learners	6

1. Definition of APEL

APEL means *Accreditation of Prior Experiential Learning*. It is defined as a systematic process involving the identification, documentation and assessment of prior experiential learning (which is based on past experiences) that can be achieved through various means, including formal, informal and non-formal learning. The purpose is to determine the extent to which an individual has achieved the desired learning outcomes, for access to a programme of study and/or award of credits. APEL at Asia e University (AeU) provides an opportunity for adult learners to gain recognition and earn academic credits for their prior learning. APEL assesses, recognises and awards credits for the individual's prior experiential learning gained either through non-formal or informal means by determining the extent to which the learner has achieved the required learning/competency outcomes for award of credit for a course. The prior experiential learning include relevant knowledge, skills and attitudes gained through training, family, life and work experiences, self-study and hobbies etc.

APEL definition in Malaysian Qualifications Framework (MQF): A verification process of an individual's achievement of a set of learning outcomes acquired through formal, informal and non-formal learning irrespective of time and place.

APEL definition in MQA Document: Guidelines to Good Practices (GGP): *Accreditation of Prior Experiential Learning*: APEL is defined as a systematic process that involves the identification, documentation and assessment of prior experiential learning, i.e., knowledge, skills and attitudes, to determine the extent to which an individual has achieved the desired learning outcomes, for access to a programme of study and/or award of credits. APEL process generally involves the assessment of experiential learning, including those which have not previously been assessed or credit rated.

There are two types of APEL:

- APEL (A) - Accreditation of Prior Experiential Learning for Access
- APEL (C) - Accreditation of Prior Experiential Learning for Credit Award

2. Definition of APEL (A)

Accreditation of Prior Experiential Learning for Access or known as APEL (A) is used to assess prior experiential learning for admission to university programme.

3. When can APEL (A) be used?

Learners who wish to enrol their studies in a chosen program at Asia e University but lacking the minimum academic requirement as stipulated in normal entry requirements may apply for entry using APEL assessment process for program at undergraduate and postgraduate level.

4. APEL (A) Admission Criteria

For Diploma:

- Must be 20 years old and above
- Have relevant working experience
- Pass the APEL (A) Assessment

For Graduate Diploma and Bachelor Level:

- Must be 21 years old and above
- Have relevant working experience
- Pass the APEL (A) Assessment

Master Level:

- Must be 30 years old and above
- Have an education certificate equivalent to university entry qualifications such as ‘A’ Level, ‘STPM’, Pre-University certificate, Diploma or equivalent
- Have more than 5 years of working experiences
- Pass the APEL (A) Assessment

5. APEL (A) Assessment

- For Diploma, Graduate Diploma and Bachelor Level, the APEL (A) Assessment comprises of
 - Portfolio (60%)
 - Aptitude Test (40%)
- For Master Level, the APEL (A) Assessment comprises of
 - Portfolio (50%)
 - Aptitude Test (40%)
 - Interview (10%)

6. Format of Aptitude Test

a) Diploma/Graduate Diploma/Bachelor Entry Level

The Aptitude Test consists of 40 Multiple Choice Questions (MCQs) and arranged into 4 Sections. The duration of this test is 2 hours.

Sections	Question Numbers	Areas	No. of MCQs
A	1-10	General Knowledge / Critical Thinking	10
B	11-20	Bahasa Malaysia	10
C	21-30	Mathematics	10
D	31-40	English	10
Total			40

b) Master Entry Level

The Aptitude Test consists of 2 parts, namely, Parts A and Part B. The duration of this test is 2 hours and 30 minutes.

PART A: This part consists of 75 Multiple Choice Questions (MCQs) arranged in 4 Sections as follows:

Sections	Question Numbers	Areas	No. of MCQs
A	1-25	General Knowledge / Critical Thinking	25
B	26-38	Bahasa Malaysia	13
C	39-63	Mathematics	25
D	64-75	English	12
Total			75

Part B: This part consists of 5 short essay questions. Answer to each question should NOT be more than 100 words.

Question Numbers	Areas	No. of MCQs
1-2	General Knowledge / Critical Thinking	10
3	Bahasa Malaysia	10
4	Mathematics	10
5	English	10
Total		40

7. Scope of APEL (A) Aptitude Test

Section	Areas	Scope of Aptitude Test
1	General Knowledge / Critical Thinking	<ul style="list-style-type: none"> • Logic reasoning • Classification skills • Pattern recognition
2	Bahasa Malaysia Literacy	<ul style="list-style-type: none"> • Reading and comprehension • Grammar and tenses • Vocabulary • Error correction • Spelling
4	Mathematics	<ul style="list-style-type: none"> • Basic numeracy • Basic algebra • Problem solving
5	English Literacy	<ul style="list-style-type: none"> • Reading and comprehension • Grammar and tenses • Vocabulary • Error correction • Spelling

8. APEL (A) Application Process for Learners

Figure 1.0 outlines the key processes and procedures of APEL (A) application for learners.

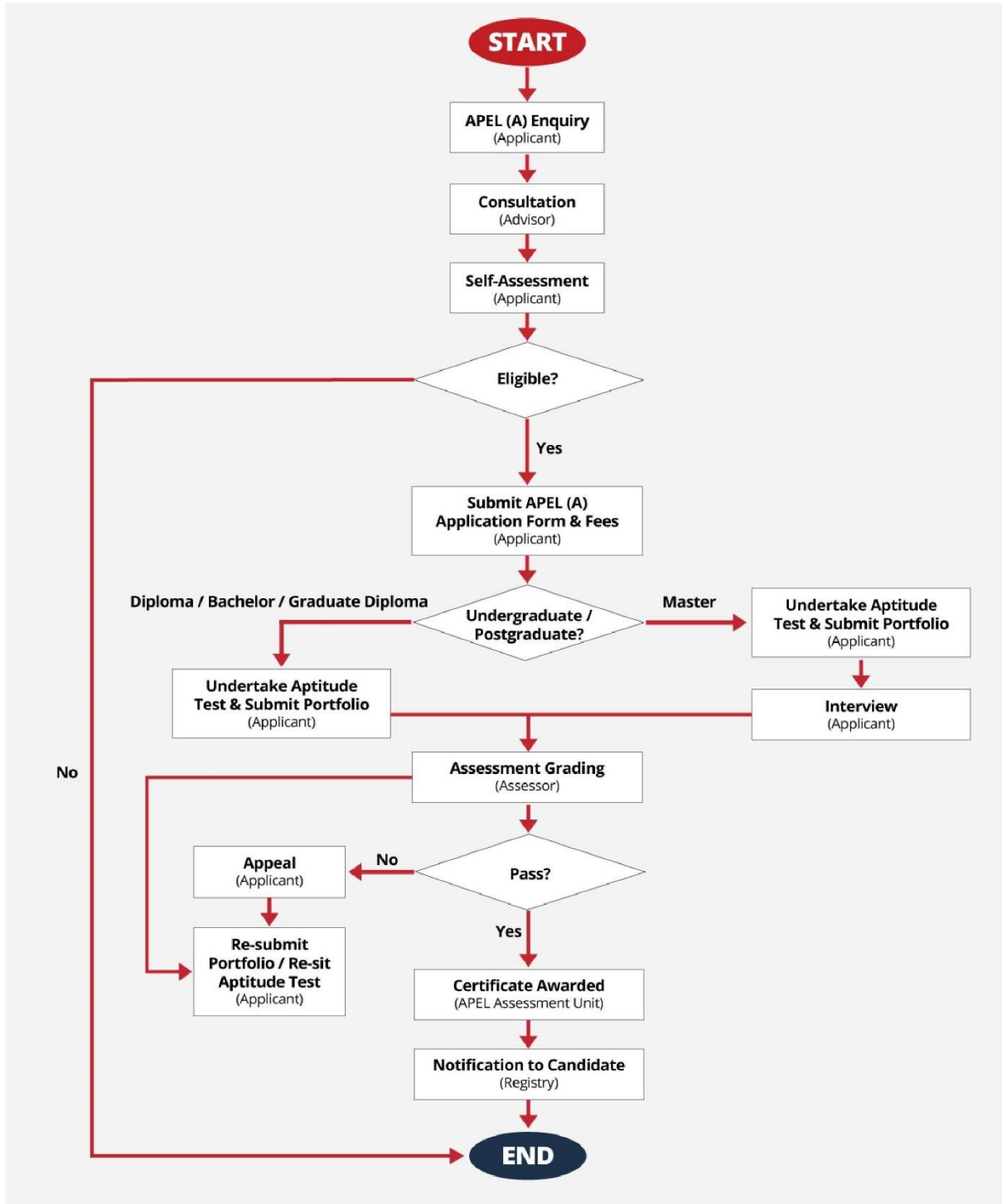


Figure 1.0 APEL (A) Application Process for Learners



Contact Information

APEL Assessment Unit
Asia e University (AeU)
apel@aeu.edu.my

Contact Person:

Assoc. Prof. Dr. Aedah Abd Rahman
Head, APEL Assessment Unit
aedah.abdrahman@aeu.edu.my
+603-50223456

Suhaila Sulaiman
APEL Assessment Unit
suhaila.sulaiman@aeu.edu.my
+603-50223491

Asia e University (AeU)

Wisma Subang Jaya
No. 106, Jalan SS 15/4
47500 Subang Jaya
Selangor, Malaysia
www.aeu.edu.my
+603-50223456 / 1-300-300-238